

MULTIMARINE SHIPYARDS LTD



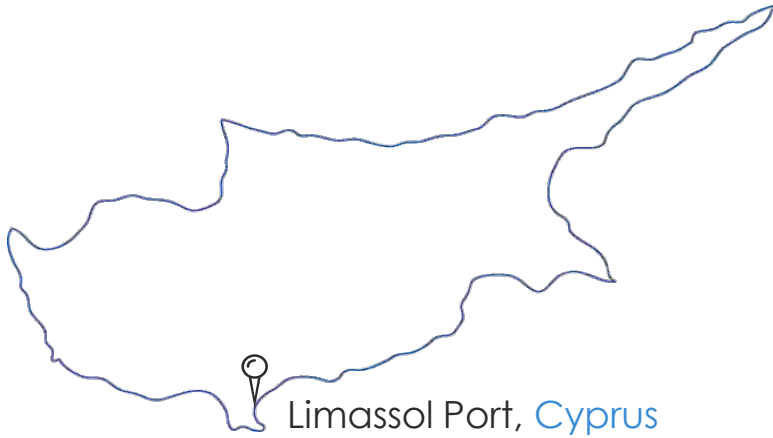
MULTIMARINE
SHIPYARDS LTD



ACTIVE BASES



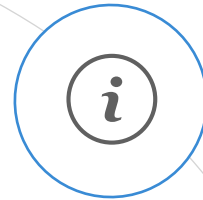
MULTIMARINE
SHIPYARDS LTD



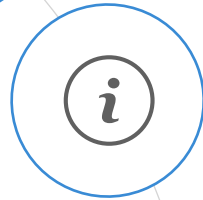
Limassol Port, Cyprus



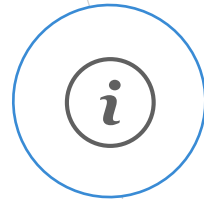
MULTIMARINE SHIPYARDS LTD



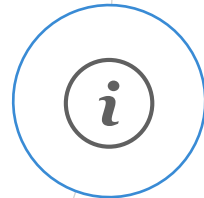
Operational since Jan 2018



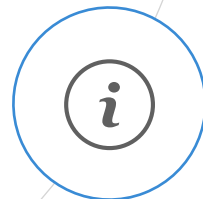
Classification Society, ABS



Lifting Capacity, 7,100t
Crane [x2] capacity, 7.5t
Dimensions, 120m x 32.40m (outer breadth) / 27.0m (inner breadth)
Environmentally Friendly!



Registered Under, Malta Flag



Development of Port Infrastructure

FLOATING DOCK 'ERENEOS'
LIMASSOL PORT



MULTIMARINE
SHIPYARDS LTD

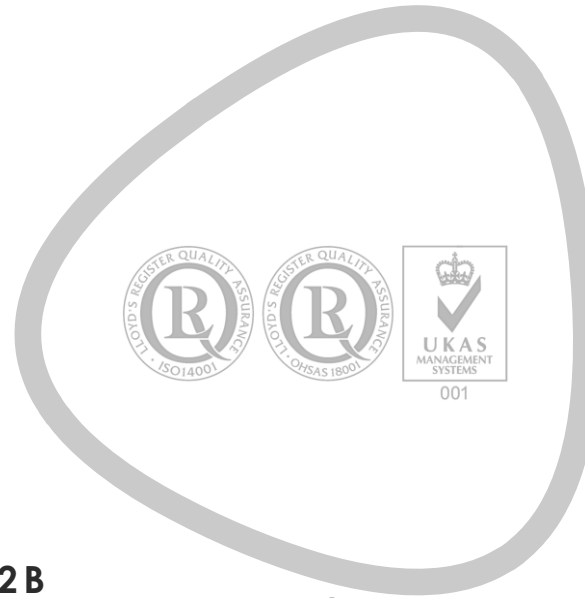
ACCREDITATIONS



01 | **Health & Safety
Management System**
OHSAS 18001:2007
LRQA

03 | **Quality
Management System**
ISO 9001:2015
LRQA

05 | **NDT Services
Approval Program 402B**
DNV-GL



02 | **Environmental
Management System**
ISO 14001:2015
LRQA

06 | **DNV-GL Welding
Workshop**
DNV-GL

COMPANY AFFILIATIONS



01 | **British Institute of NDT
BiNDT**
Corporate Member



02 | **Lifting Equipment Engineers Association
LEEAA**
Corporate Member



MULTIMARINE SHIPYARDS LTD - PARTNERSHIPS



- ABB Service Point/Station for Turbocharges within MMS Facilities
- Signed agreement in June 2018. Service Point to be stationed inside Limassol Port
- ABB facilities within newly developed Shipyard Workshop
- Collaboration to be extended with other divisions of ABB



MULTIMARINE SHIPYARDS LTD - PARTNERSHIPS



- ABB to develop a Service Point/Station for Turbocharges within MMS Facilities
- Signed agreement in June 2018. Service Point to be stationed inside Limassol Port
- An ABB dedicated area will be designated in the newly developed Shipyard Workshop
- Collaboration to be extended with other divisions of ABB



SHIPYARD & SHIP REPAIR SERVICES



Services

Offshore, Voyage & Anchorage Repairs
Dry-Docking Project Management;
Structural Repairs;
Pipe Repairs;
Boiler Room Repairs;
Grit Blasting & Painting Operations;
Tank Cleaning & Repairs;
Maintenance & Engine Room Repairs;
Deck Re-instatement & Conversions;
Electrical & Electronic Repairs;



‘We complete more than 90%
of all types of
Ship Repairs in Cypriot Waters



WELDING SERVICES



- ① Class Welding Approvals for Plates & Pipes from [ABS](#), [DNVGL](#), [BV](#)
- ① Welding Services per code such as [AWS D1.1](#), [ASME IX](#) & [API 1104](#)
- ① Significant [material coverage](#)

Pipe Material	Plate Material
API 5L X52 – X80 & Equivalents	S235 - S690 & equivalents
AISI 4130 & AISI 8630	AISI TP 316(L)
AISI TP 316(L)	Duplex 2205
Duplex 2205	
Inconel 718	
Monel 400	

- ① Welding methods: [GTAW](#), [SMAW](#), [GMAW](#), [FCAW](#) & [SAW](#)
- ① Application of [Lincoln STT Pipe Welding](#)
- ① Programmable & Recordable [Post Weld Heat Treatments](#)



MULTIMARINE SHIPYARDS LTD - FLOATING DOCK 'ERENEOS'



MULTIMARINE
SHIPYARDS LTD

Operational since Jan 2018

Successful Dry-dockings to date

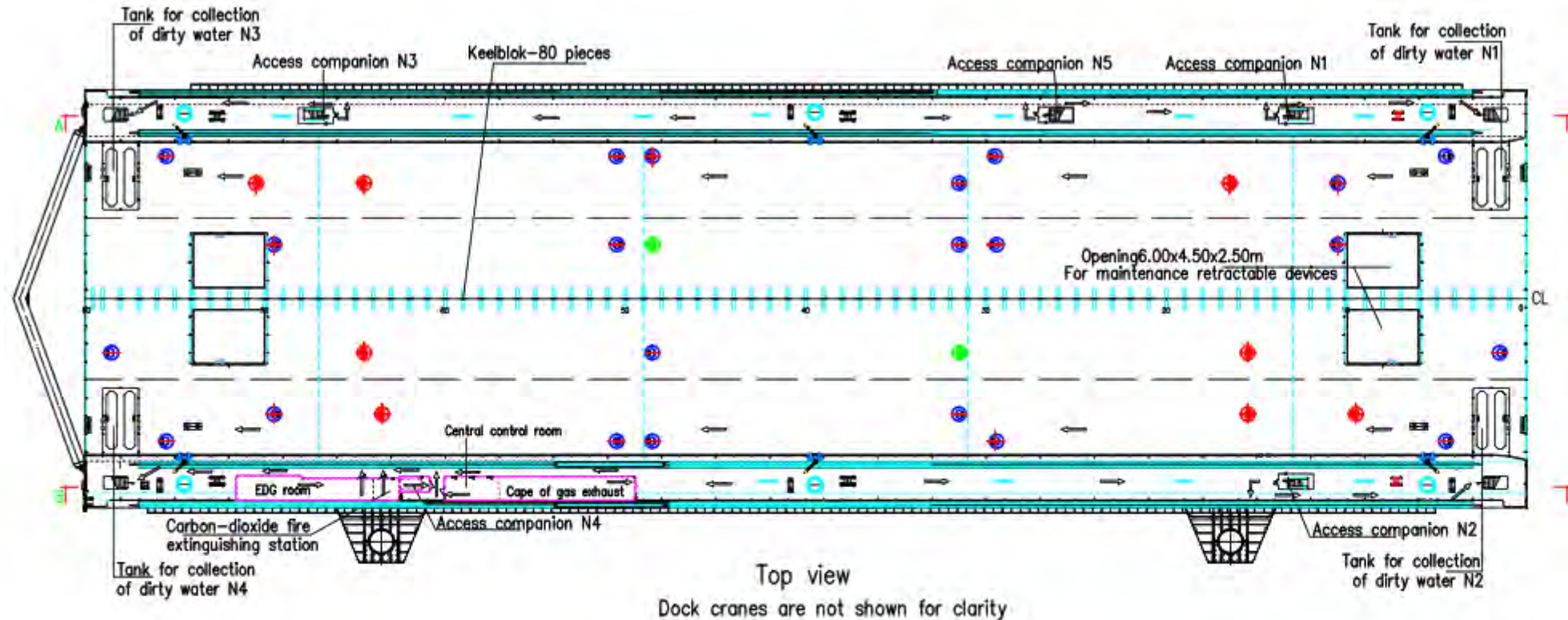
- BURCH WILLIAMS (OSV)
- TED SMITH (OSV)
- ANDREA CHOUEST (OSV)
- EUPLOIA 1 (Oil Tanker)
- ORIEL (Yacht)
- M.DACHOR (Barge)
- VOS TETHYS (OSV)
- MARION (Tug)
- OTHELLO (Tug)
- SEA SPARK (OSV)
- SEA SPEAR (OSV)
- MONTET TIDE (OSV)
- JOHN A LAPORDE (OSV)
- PETROLINA OCEAN (Oil Tanker)
- HANDIN TIDE (OSV)
- PRIVATE YACHTS



FLOATING DOCK 'ERENEOS' – GENERAL ARRANGEMENT



MULTIMARINE
SHIPYARDS LTD



MAIN CHARACTERISTICS OF THE FLOATING DOCK "ERENEOS"

Lifting capacity of the dock, tons	7,100
Length of pontoon deck, m	120.0
Breadth, between outer sides of pontoon (without bilge rails),	32.4
Breadth, between wing-walls, m	27.0
Height of pontoon along centerline, m	4.2
Height of top-deck, m	13.2

MULTIMARINE SHIPYARDS LTD - FLOATING DOCK 'ERENEOS'



MULTIMARINE
SHIPYARDS LTD

BURCH WILLIAMS (OSV)

- Dry-docking and mooring
 - Full Hull Treatment
 - Coat topsides
- Paint draft marks /IMO NO/Vessels name/load line
- Anti-fouling flat bottom / shell plating sides
 - Tyre fenders repair/ replacement
 - Tugger winches certification
- Lifting gear inspection and certification
 - Rescue boat annual inspection
 - VDR Annual Test
 - Magnetic compass calibration
 - Maintenance Gyro 1 & 2

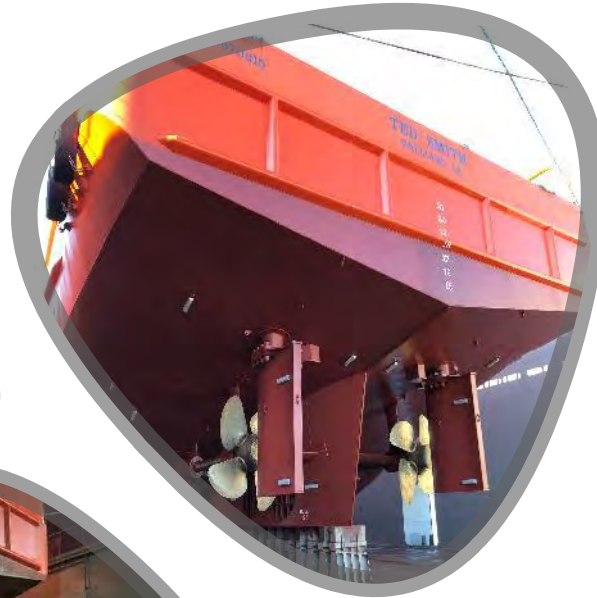


MULTIMARINE SHIPYARDS LTD - FLOATING DOCK 'ERENEOS'



TED SMITH (OSV)

- Dry-docking and mooring
- Electrical power supply
- Full hull treatment
- Hull and engine room works and repairs
- Steering and propulsion (inspection and repairs)
 - Tank cleaning and TU painting
 - Material supplies



MULTIMARINE SHIPYARDS LTD - FLOATING DOCK 'ERENEOS'



TED SMITH (OSV)



Hull
Condition before treatment



Steering and propulsion
Condition before treatment



Steering and propulsion
Overhaul



Anchor and Chain
Laying and inspections



Steering and propulsion
Installation post treatment



Hull, steering and propulsion
Post treatment



Hull
Post treatment

MULTIMARINE SHIPYARDS LTD - FLOATING DOCK 'ERENEOS'



ANDREA CHOUEST (OSV)

- Dry-docking and mooring
 - Electrical power supply
 - Full hull treatment
- Hull and engine room works and repairs
- Steering and propulsion (inspection and repairs)



MULTIMARINE SHIPYARDS LTD - FLOATING DOCK 'ERENEOS'



ANDREA CHOUEST (OSV)



Hull
Condition before treatment



Steering and propulsion
Condition before treatment



Steering and propulsion
Overhaul



Hull and bow thruster tunnels
Treatment



Steering and propulsion
Propeller polishing post inspection



Anchor and chain
Laying and inspections



Hull
Post treatment

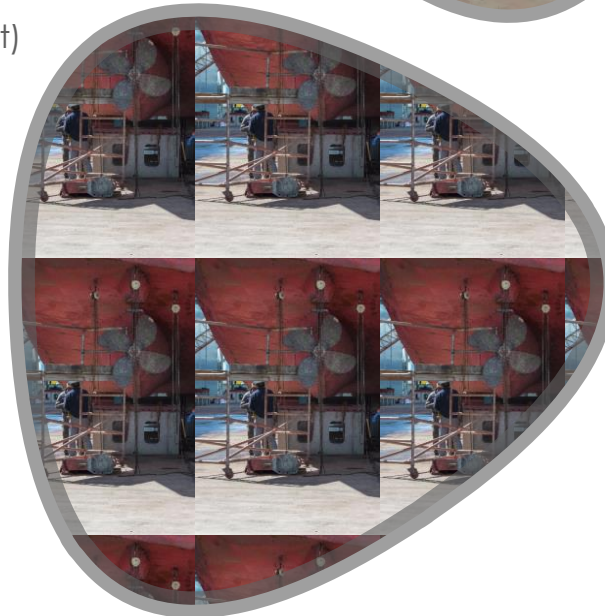
MULTIMARINE SHIPYARDS LTD - FLOATING DOCK 'ERENEOS'



MULTIMARINE
SHIPYARDS LTD

EUPLOIA 1 (Oil Tanker)

- Dry-docking and mooring
- Electrical power supply
- Full hull treatment and repairs
- Engines, generators, thrusters and motors
- Steering and propulsion (inspection and repairs)
 - Tank cleaning and inspections
 - Piping and pressure testing
 - Inspections and crane load tests
- Annual inspections (life saving equipment)



MULTIMARINE SHIPYARDS LTD - FLOATING DOCK 'ERENEOS'



EUPLOIA 1 (Oil Tanker)



Hull Sandblasting



Steering and propulsion
Before treatment



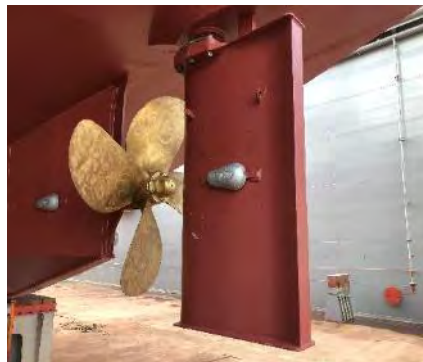
Penetrant testing
Tailshaft



Penetrant testing
Propeller



Anchor and chain
Before inspection, washing and painting



Steering and propulsion
Post treatment



Hull and anchor
Post treatment



Fender maintenance
and tire replacement

MULTIMARINE SHIPYARDS LTD - FLOATING DOCK 'ERENEOS'



ORIEL (Yacht)

- Dry-docking and mooring
- Full hull treatment and repairs
- Hull works and repairs
- Material supplies

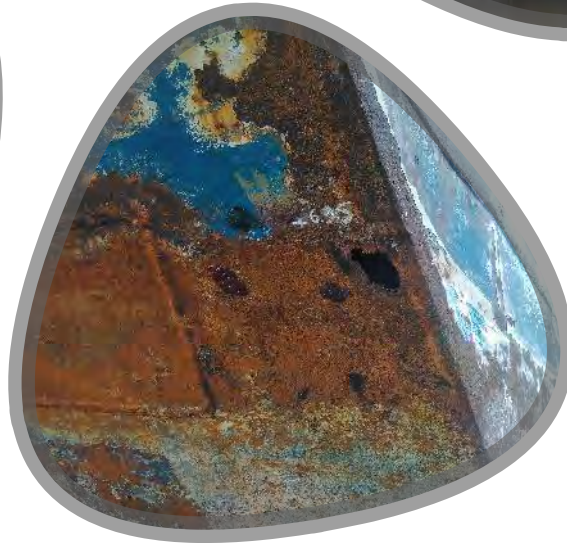
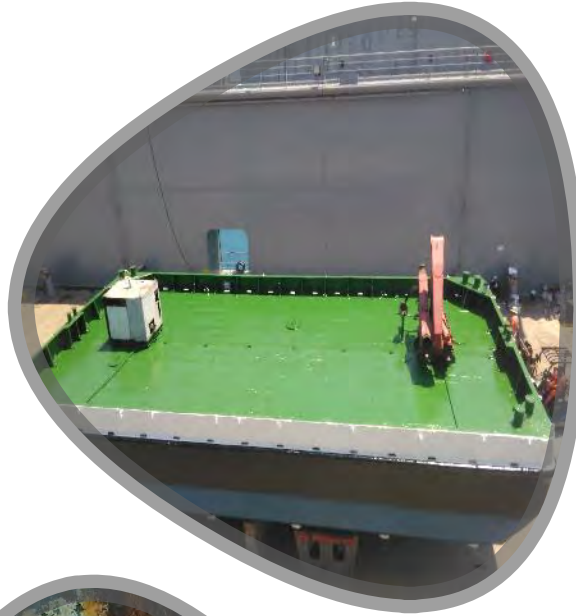


MULTIMARINE SHIPYARDS LTD - FLOATING DOCK 'ERENEOS'



M. DANCHOR (Barge)

- Dry-docking and mooring
- Electrical power supply
- Full hull treatment
- Hull works, inspection and repairs
- Material supplies



MULTIMARINE SHIPYARDS LTD - FLOATING DOCK 'ERENEOS'



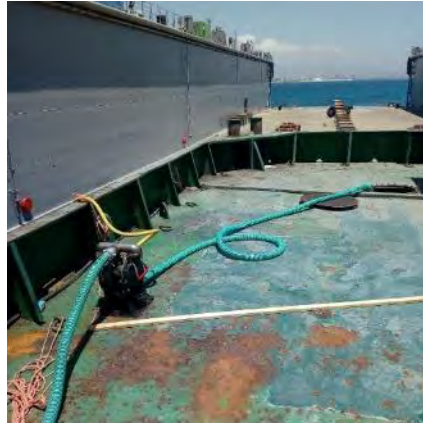
M. DANCHOR (Barge)



WaterJet Cleaning



Condition of Hull
before WJ cleaning



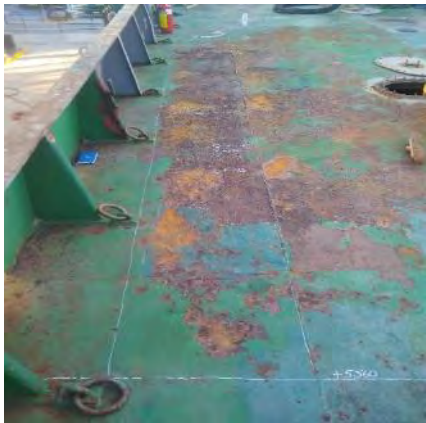
Dewatering



Heavy corrosion on
STBD-FWD Bollard Pedestal



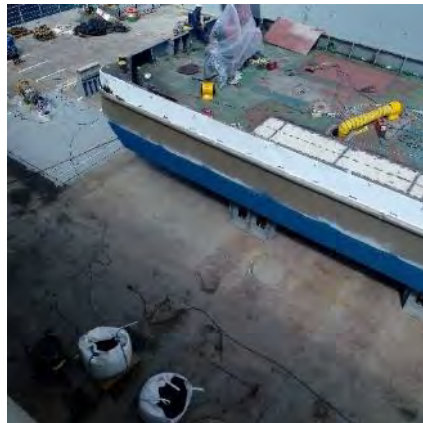
Steel replacement on
STBD-FWD Bollard Pedestal



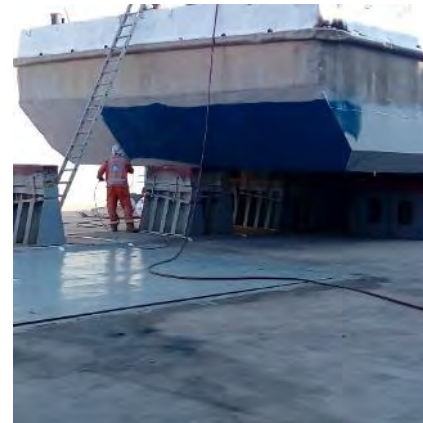
Corrosion/pitting
(deck plates)



Deck repairs
Plate replacement



Deck repairs
Plate replacement



Coating Operations



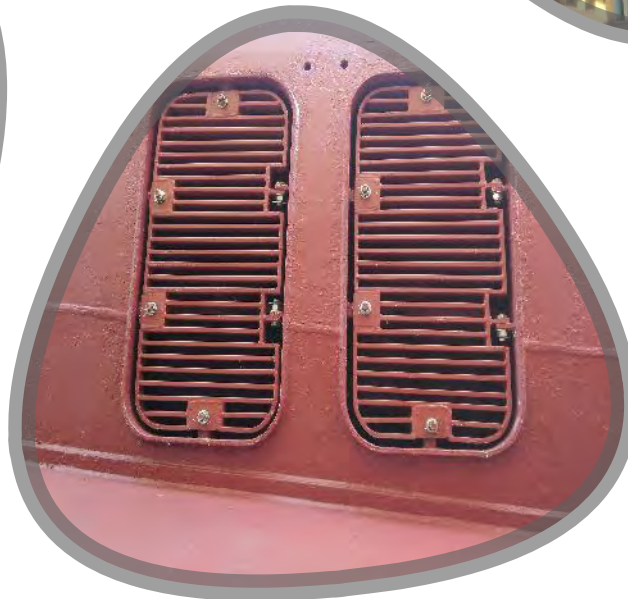
Anode replacement

MULTIMARINE SHIPYARDS LTD - FLOATING DOCK 'ERENEOS'



VOS TETHYS (OSV)

- Dry-docking and mooring
- Full hull treatment and repairs
- Steering and propulsion (inspection and repairs)
 - Piping works
 - Machining Services



MULTIMARINE SHIPYARDS LTD - FLOATING DOCK 'ERENEOS'



VOS TETHYS (OSV)



Hull Scraping



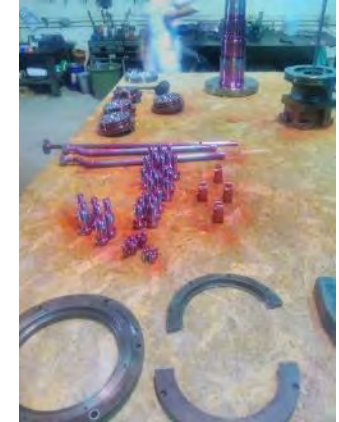
Condition before treatment



Sea Chests
Condition before treatment



Steering and propulsion
Overhaul services



Steering and propulsion
Inspections



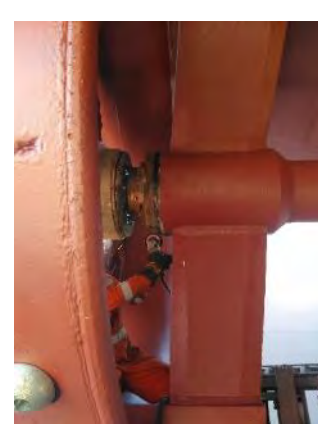
Steering and propulsion
Post maintenance



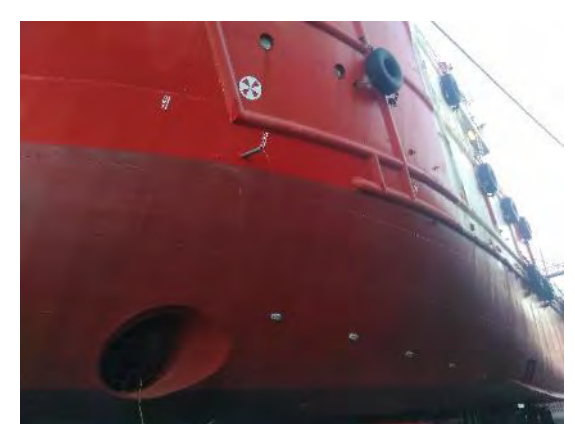
Steering and propulsion
Post maintenance



Sea Chests
Post Maintenance



Steering and propulsion
Adjustments - Clearances



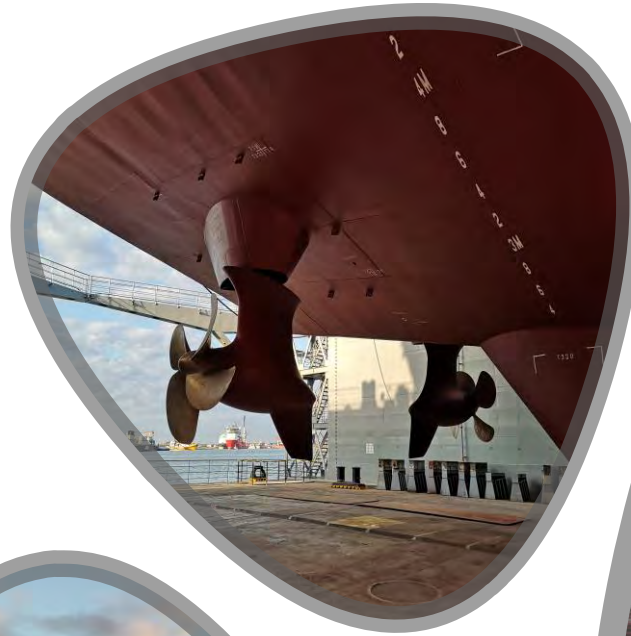
Anode replacement

MULTIMARINE SHIPYARDS LTD - FLOATING DOCK 'ERENEOS'



SEA SPARK (OSV)

- Five Year Class Survey (DNVGL)
- Dry docked time @ 18 days



MULTIMARINE SHIPYARDS LTD - FLOATING DOCK 'ERENEOS'



SEA SPEAR (OSV)

- Five Year Class Survey (DNVGL)
- Dry docked time @ 14 days

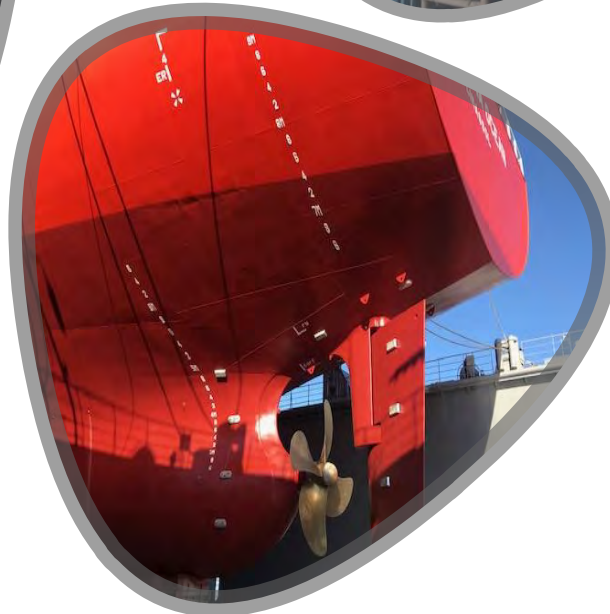


MULTIMARINE SHIPYARDS LTD - FLOATING DOCK 'ERENEOS'



PETROLINA OCEAN (Oil Tanker)

- Five Year Class Survey (DNVGL)
- Dry docked time @ 14 days

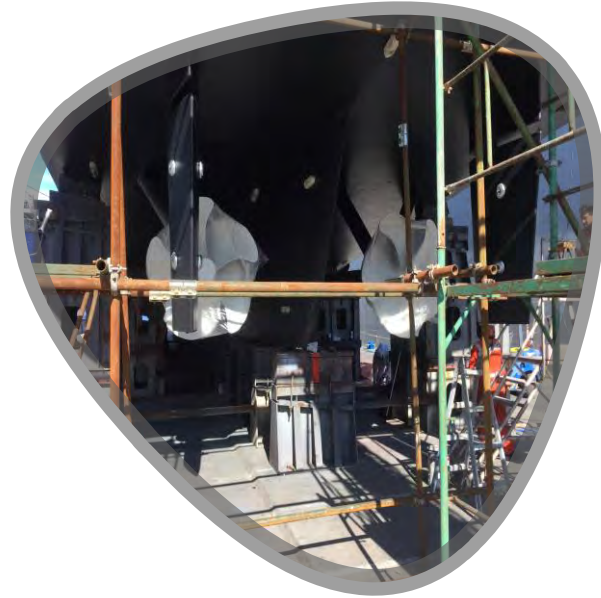


MULTIMARINE SHIPYARDS LTD - FLOATING DOCK 'ERENEOS'



PRIVATE YACHTS

- Dry-docking and mooring
- Full hull treatment and repairs
 - Exterior and Interior Works
 - Carpentry & Maintenance
- Mechanical & Engine room Works
 - Wood treatment
 - Polishing



MULTIMARINE SHIPYARDS LTD – QUAYSIDE FACILITIES



AFLOAT REPAIRS in 2018

- Pacific Viper
- Montet Tide
- ALDEMIR SOUZA TIDE
- McKenny Tide
- Far Samson
- Far Supporter
- Joby
- Sanco Atlantic
- OLYMPIA
- SAIPEM FDS
- SAIPEM FDS2
- Mo Toucan
- ENSCO DS-7
- Sea Spear
- Sea Spark
- Vos Tethys
- Ocean Investigator
- Skandi Feinstein
- Skandi Saigon
- HMS ECHO
- SAIPEM 12000
- SK1200
- Vos Prudence
- Vos Purpose
- Vos Prime
- Seven Eagle
- Louise Borchard
- Vos Chablis
- CATAMARCA
- Scarabeo 9
- SAIPEM 10000
- Hartland Point



SHIPYARD & SHIP REPAIR SERVICES



MULTIMARINE SERVICES LTD

www.multimarine.com.cy



OIL & GAS



MARINE



POWER &
INFRASTRUCTURE

LIST OF SHIPYARD & SHIP REPAIR SERVICES IN 2017

#	Vessel	Description of Service
1	VOS TRITON	Electrical Repairs & Engine Cylinder Heads Overhaul
2	VOS TETHYS	Main Engine Repairs
3	LEWEK TOUCAN	Bow Thruster Motor Removal, Overhaul and Installation
4	Far Supporter	Various Repairs
5	Pacific Khamsin	Various Repairs
6	Ramses	Winch Overhaul
7	Baltic Champion	Pipe Works
8	French Navy Vessel: MONT CALM	Various Repairs
9	Far Server	Various Repairs
10	Far Samson	Diving Works
11	Ramform Tethys	Inspections
12	Nordic Suzhou	Various Repairs
13	Bourbon Argos	Various Repairs
14	LEVROSO	Various Repairs
15	PETER WILLEMOES	Various Repairs
16	Seven Eagle	Various Repairs
17	Seven Antares	Various Repairs
18	Rockwater 2	Various Repairs
19	FUGRO SCOUT	Inspections
20	Burch Williams	Various Repairs
21	SAIPEM FDS	Various Repairs
22	BALTIC CHIEF I	Various Repairs
23	Seastar Endeavor	Various Repairs
24	AS LAETITIA	Various Repairs
25	SKIP	Various Repairs
26	Coastal Challenger	Various Repairs
27	P&O TROODOS	Various Repairs
28	P&O HERCULES	Various Repairs
29	THOR OMEGA	Various Repairs
30	FANTHOLMEN	Mechanical Repairs
31	SALAMIS FILOXENIA	Various Repairs
32	DEEP CYGNUS	Inspections
33	DP CIRRUS	Inspections
34	ALDEMIR SOUZA TIDE	Various Repairs
35	USS PHILIPPINES	Various Repairs
36	SCL AKWABA	Various Repairs



MARINE



THANK YOU
FOR YOUR ATTENTION



MULTIMARINE
SHIPYARDS LTD

www.multimarine.com.cy

info@multimarine.com.cy

